



Great [Wood] News

Autumn Term 4



School Contact Details



Telephone: 01538 702355 option 4
Email: office@greatwood.staffs.sch.uk

Arbor: School Messaging
Website: www.tmpf.staffs.sch.uk

Diary Dates

Friday 13th October	- Harvest Own Clothes Day
	- Harvest Singing & Maypole Dancing, 3pm - All Welcome
Wednesday 18th October	- New Reception Tour, 3.45pm
	- PTFA AGM, 6.30pm - All Welcome
Wednesday 25th October	- Year 4 Young Drivers Day
	- New Reception Tour, 9.45am
Thursday 26th October	- Year 2/3 Stone Age Day
	- PTFA Spooky Disco, 6-7.30pm
Friday 27th October	- School Closes for Half term
Monday 6th November	- Inset Day - School Closed to Pupils
Tuesday 7th November	- School Re-Opens
Monday 13th November	- Anti Bullying Week, Odd Socks Day
Friday 17th November	- BBC Children In Need
Thursday 23rd November	- Flu Vaccinations
Friday 24th November	- Tean Christmas Lights Switch On
Saturday 25th November	- Christmas Fair, 11am-1.30pm - All Welcome
Monday 27th November	- National Child Measuring Programme
Thursday 30th November	- PTFA Christmas Bingo, 6.30pm - All Welcome
Tuesday 5th December	- Nativity Performance, 5.30pm
Thursday 7th December	- Nativity Performance, 5.30pm
Friday 8th December	- Alzheimer's Elf Day
Monday 11th December	- R/1 & Y2/3 Christmas Trip - SnowDome Tamworth
Tuesday 12th December	- Victoria Hall Christmas Concert
Thursday 14th December	- KS2 Christmas Trip - The New Vic Theatre, The Nutcracker
Friday 15th December	- Christmas Jumper Day



Harvest

At Great Wood we are going to celebrate harvest a little differently again this year.

On Friday 13th October we will be having a non-uniform day, where children can come to school in Autumn colours. We are welcoming donations for The Cheadle and District Foodbank should you wish to donate.

As part of our Harvest celebrations, our children will be singing Harvest songs, outside school from 3pm for your entertainment.

Our amazing maypole dancing squad will also be performing as part of our Harvest celebrations. We hope that you will be able to support our fantastic children as they perform from 3pm.

They will be shaking buckets, so please bring some loose change.



Great Wood Primary School

Vicarage Road, Upper Tean, Staffordshire, ST10 4LE. Tel: 01538 702355 option 4.
E-mail: office@greatwood.staffs.sch.uk



Looking for the right school?

Is your child due to start school in September 2024? If yes, come and see what Great Wood Primary School has to offer. We are a small village school, with a true family ethos, caring and dedicated staff, offering high-quality education.

All families are welcome to visit our amazing school. We will be holding some informal tours of our school, on the following dates:

- Wednesday 11th October 9.45am
- Wednesday 18th October 3.45pm
- Wednesday 25th October 9.45am

If you would like to come and see what we have to offer, please contact us on 01538 702355 option 4 or email the school office. Please contact us if you would like to visit us at an alternative time.

The school tours are by appointment only. During the morning tour you will be able to see the children learning in their classroom.

We look forward to meeting you and showcasing all that Great Wood has to offer.

We look forward to meeting you.



Merit Trophy's

Please can we remind you that all merit trophies issued during a Friday's Celebration Assembly need to be returned to school by Thursday the following week, to enable the next winner to take them home. It is very disappointing for the children if they do not get to take the trophy home, because it's not been returned. Thank you.



PTFA Meeting

Our next PTFA meeting will be on Wednesday 18th October, at 6.30pm, which will be the AGM. If you are interested in getting involved please come along and find out what it is all about.

Without the PTFA it would not be possible to run many of our events like discos, bingo, race nights and Summer Fair, which provide funds for all those little extras for our children.

You don't need to commit to every event, any help would be greatly appreciated. If you are unable to attend the meeting, but are able to help out with any events please speak to Mrs Buckley in school.

Come along and join us, for a brew and find out all about our Christmas events.

Christmas Trips

We are delighted to inform you that we have already booked our Christmas trips for our Great Wood children. Our children in Reception, year 1, 2 and 3 will be going to SnowDome where they will play in real snow and meet Santa and his friends.

Our children in years 4, 5 & 6 will be going to see The Nutcracker at the New Vic Theatre.

Both trips are now live on Arbor, under the trips section, with the option to pay in instalments, to ease costs in December.

We are really looking forward to taking the children on these fantastic trips.



We'll be wearing odd socks with the Anti-Bullying Alliance and their patrons, Andy and the Odd Socks, on Monday 13th November for Odd Socks Day. Will you?

Odd Socks Day

#AntiBullyingWeek
#OddSocksDay



Spooky Disco

Our Great Wood Spooky Disco will be on Thursday 26th October 6-7.30pm.

Put on your spookiest outfit because there will be a prize for the best dressed Spook! There will be spot prizes for the spookiest dancers and a raffle at the end of the night.

Each Spook will receive a raffle ticket, a spooky goody bag and as much Spooky punch (non alcoholic) as they can drink!

Entry is £2 per spook and Reception children must be accompanied by an adult.

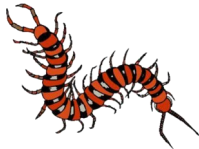


Bug Club

We will be welcoming back our very popular 'Bug Club', this time for Great Wood children. This club will start after half term on Tuesday after school and run for 6 weeks (There will be no club on Tuesday 28th November).

There are limited places still available. The cost of the club will be £30 for 6 weeks.

Please book via Arbor, under the clubs section to secure your child's place.



Keeping warm!

As we start to say a reluctant goodbye to the summer and the cold & wet weather creeps in, we ask that all children bring a coat to school, to wear at playtime and lunchtime. Also, as it becomes appropriate, please can you ensure that your child/children have hats and gloves to keep them warm, when they are on the playground.

Children that do not have suitable outdoor clothing, will not, as the weather becomes colder, be allowed to have an outdoor playtime and will have to remain inside at break and lunch times.

Thank you for your help in keeping our Great Wood children warm and cosy.



Christmas Fair

On Saturday 25th November, we will be holding our annual amazing Christmas fair. It will run from 11am until 1.30pm. If you, or anyone you know, would like a stall at the fair, (for just a small donation) please let Mrs Buckley, or the school office know and they will be happy to help.



OCTOBER SportFest



Bishop Rawle CofE Primary School

Royal Walk, Cheadle, ST10 1QA

09:00-15:30

Half-Day & Wrap-Around options available

Come and join us for some sports, games and activities from October 30 - November 03.

Our action-packed program gives children the chance to remain active, develop skills and make new friends within a safe and secure program.



We are inclusive!

We value the importance of accommodating children who have come to us from different backgrounds. We aim to provide an environment where everyone is challenged and given an enjoyable experience.

Search for your venue: asmsports.co.uk



Call: 01782 366332
Visit: www.asmsports.co.uk
Email: info@asmsports.co.uk



Christmas Bingo

As is our Great Wood tradition, our fantastic PTFA will be holding our Christmas Bingo on Thursday 30th November. Doors will open at 6pm and eyes down at 6.30pm. There will be many Christmassy prizes to be won and loads of fun to be had.

Save the date in your diary!



Your Child's School Uniform

Unfortunately, we are getting a lot of parents contacting us, regarding missing school uniform and PE kits.

We would ask that you ensure that all of your child's uniform, including their PE kit, pumps, trainers, shoes and coats are clearly labelled with their name. As we are sure that you can imagine, children easily mislay their belongings, or accidentally pick up somebody else's PE kit. We appreciate the cost of your child's uniform and hope that you will help us to make sure that your child/children do not lose any of their uniform, or kit. Labelling makes it far easier and quicker to reunite items with their actual owners.

Please can you also check that your child is wearing their own uniform and not somebody else's labelled uniform, because we still have some missing.

For anyone missing uniform, we already have a large collection of unnamed, unclaimed items.

Thank you for your help in this matter.



Car Parking

Unfortunately we, once again, have to draw your attention to parking at and around school. Despite numerous requests, we are still experiencing major problems with the way in which cars are being parked at the beginning and the end of the school day.

Last week there was a incident involving a pedestrian and a car, which without the quick thinking of a parent, could have ended very badly! We do not want our children at risk!

Could we once again **PLEASE** ask parents, grandparents, carers and friends to be mindful about where they park.

- It is an offence to park on the zig-zag lines outside the school **AT ANY TIME**
- It is an offence to park within 10 meters of a junction **AT ANY TIME**
- It is an offence to park in front of a dropped kerb (thereby preventing residents from using their driveway)
- It is an offence to double park, thereby blocking the roadway to other traffic
- Police advise **NOT** to park on the pavement (and this is clearly dangerous when children are using the pavement)

Great Wood's staff car park is for Staff **ONLY. PLEASE DO NOT USE THE STAFF CAR PARK.** This also applies at the end of afterschool clubs and for Wrap Around. ALSO please can we remind all pedestrians to use the **FOOTPATH ONLY** and not cut across the car park.

Please have a think about:-

- Walking to/from school - whilst this is not practical for some, most of our pupils live within half a mile of the school and this would be a healthy way to start/end the school day.
- Car-Sharing - could parents who live near to one another agree to car-share (and, at the same time, save on petrol)?
- A walking bus - where a group of children, living near to one another, are walked to school by a couple of adults. Adults could take it in turn to be the walkers.
- Using the large, free and safe car park on Old Road - only a 5 minute walk away.
- Using the car park on Great Wood Hall and crossing with our school crossing patrol.

**We would be extremely grateful if you could adhere to these points.
Please help us keep our children safe.**



Flu Vaccinations

All children have been offered a flu vaccine as part of the school's vaccination programme. The vaccine is designed to protect children against flu, which can be an unpleasant illness. By having the vaccination, children are also less likely to pass the virus on to friends and family.

This years Flu Vaccinations will be held at Great Wood on Thursday 23rd November - Further information to follow.



Bugs!



We have a couple of bugs going around school at the moment, to help stop these spreading please can you refrain from sending your child back to school until 48hours after any episode of sickness. Thank you for your help.

Attendance Ladder

Attendance

Equates to:



Coming to school every day and on time, means that we can learn lots of new and exciting things!

School attendance and lateness is closely monitored to ensure that children have the best opportunity to learn.

Attendance to week ending 6th October 2023:

Reception/ Year 1 - 95.51%
 Years 2 & 3 - 97.05%
 Years 4 & 5 - 93.83%
 Years 5 & 6 - 92.87%

School attendance for the week: 93.36%

Each week, Woody our attendance bear, gets to spend the week with the class who has the best attendance. I wonder where Woody will be next week!

Individual child attendance can be found on their Arbor profile.

How close are you to reaching the top of the attendance ladder?

**CHECKLEY PARISH
 PUMPKIN & SCARECROW
 COMPETITION & TRAIL**

CREATE A SCARECROW, CARVE A PUMPKIN OR DECORATE YOUR HOME

27TH TO 31ST OCTOBER

ENTRY IS FREE, WITH PRIZES FOR THE BEST ENTRIES

events@checkley.staffslc.gov.uk
 Stephanie - 07895168323
 @checkleyparishcommunitytrails

SPONSORED BY SUNNY HOUSE FARM

Please can we remind you that children's Meal, Break & Wrap Around accounts should be paid for in advance, NOT in arrears.

Please check regularly and top up accordingly.

Thank you.



Healthy Lunches

We would like to remind parents that Great Wood is a healthy eating school. If your child brings a packed lunch to school, please can you ensure that it is as healthy as possible. "Eat better, feel better" Change4life.



PTFA Facebook Page

Please take a look at our Great Wood PTFA Facebook page. Our amazing PTFA post lots of information about our upcoming events and how our recent fundraising events have done. Did you know that, to keep costs down for our families, our PTFA funded over £1,300 worth of coach travel for our children last year?



Exciting News!

Introducing Martial Arts Explorers for Young Warriors!

J K Martial Arts is thrilled to unveil a fantastic addition to our class line-up – Martial Arts Explorers! ✨ This dynamic and engaging martial arts class is exclusively designed for kids aged 4 to 7 years old.

✨ Martial Arts Explorers: A Journey of Discovery ✨

This program is tailor-made with your child's development in mind. It's a lively fusion of Karate and Kickboxing fundamentals, interactive games, skill-building activities, and age-appropriate techniques.

But that's not all – these classes are not just about martial arts; they're about setting your child up for school life. 🏫 They'll gain valuable motor skills, improve communication, develop coordination, learn respect and discipline, and boost their confidence for tackling school life. 🙌

Through these classes, they'll understand there's no such word as "can't," learn to set and achieve goals, and become familiar with interacting with new friends. They'll know how to handle bullies, report issues, and communicate respectfully with everyone around them. It's all about giving them the best start in life. 🚀

📅 Class Details:

- ✨ Start Date: October 17th, 2023
- ✨ Day: Tuesdays
- ✨ Location: Great Wood Hall, Tean
- ✨ Time: 5:30 PM
- ✨ Duration: 30 minutes
- ✨ Limited Class Size: We'll have no more than 15 students in this class.

If you think your child would enjoy these classes, please let us know. We'll secure your spot starting from our grand opening on October 17th. 📅

Get ready for a journey of discovery with Martial Arts Explorers! ✨

Soccer school holiday sessions near you!

Sessions are running throughout Stoke-on-Trent & Staffordshire.

Make sure to scan the QR code to find your nearest venue and get more information on tickets and upcoming events.

Try the web link:
<https://officialsoccerschools.co.uk/stokecityfc/>

Courses will run every school holiday for children between the ages 3 to 15 years old.

Courses include:
 Mini Potters (3-6 yrs)
 Outfield (6-12 yrs)
 Girls only (6-15 yrs)
 Goalkeeping (6-15 yrs)

01782 592 252 | community@stokecityfc.com

Please ask even if your child is of infant school age.

Free School meals

Do you receive any of the following?

- Income support
- Employment Support Allowance (Income Related)
- Income based Job Seekers Allowance
- Guaranteed Pension Credit
- Child Tax Credit and your income (as calculated by the Inland Revenue) is less than £16,190
- Universal Credit
- Receiving support under Part VI of the Immigration and Asylum Act of 1999
- In the Armed Forces

Want to apply?

Not sure?

Ask at the office

If you can answer yes to any of the above you may qualify for free school meals/Pupil Premium

The school office will help with your application. If your application is successful not only will your child receive free school meals, but our school will receive £1,300 additional funding (per child). This is called Pupil Premium.

All applications are confidential.

Headlice

We have, unfortunately, got the problem of headlice in school again. Please can we ask that you check your child's hair as a precaution and treat as necessary. Please be extra-vigilant in checking your child's hair each week, to help us to eliminate this persistent problem. Many thanks for your help.



**You are not alone. Help is here.
And it's on a new number**

NHS
North Staffordshire
Combined Healthcare
NHS Trust

**24 HOURS A DAY
7 DAYS A WEEK**

0800 0 328 728



If you are concerned about your mental health or someone you care for, you can contact the Access Team at our Crisis Care Centre directly, any time of the day or night, every day of the year and for any age on 0800 0 328 728 (Option 1).

If you have an impairment and are unable to use the telephone, you can text the Access Team on 07739 775202 and the team will respond as soon as possible (please note: this text service is charged at your network provider's rate).